

MUSCLE TOOLS

Electronic Diagnostics | Special Tools | Shop Equipment | A/C Tools

Q1 2019 Edition

OTC ROBINAIR actron BOSCH

Purchase a 1522A OTC 2,000 lb. Low Lift Transmission Jack and a 5091 OTC HD Spindle Assembly Adapter Plate together in the same purchase



1522A
Transmission Jack

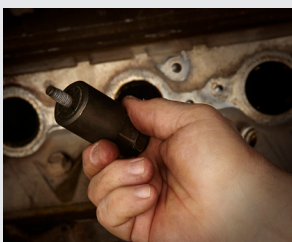
Receive a free OTC Bottle Jack

Choose from OTC Bottle Jack options:
9302, 9303, 9305, 9308, 9312, 9314, 9320, 9322, 9330



See page 14

6982PMC PROFESSIONAL MECHANICS COLLET



NEW

See page 7

PROMOTIONS

All promotions valid Q1 2019, unless otherwise stated. For promotion details and to redeem, visit Boschrebates.com. Dated proof of purchase and/or serial number(s) required when registering for rebate. Must redeem within 30 days of promotion end date.

Purchase an eligible Robinair A/C machine and a Leak Detector together, and receive a free Dust Cover or Master Disconnect Tool Set

Eligible A/C machine models:

- 34288NI, 34788NI, 34788NI-H, 34988NI, AC1234-4 and AC1234-6

Eligible Leak Detector models:

- LD3, LD5, or LD7 See page 15

Purchase must be made between
January 1, 2019 – March 31, 2019



Master Disconnect
Tool Set (6508)

FREE

Dust Cover
(17499)

Purchase an OTC 3896 Evolve scan tool, receive a Bosch Power Box 360C Jobsite Stereo



✓ LIFETIME WARRANTY +
✓ FASTEST TO FIX
✓ EXPANDED COVERAGE



*Diagnostics for Life lifetime hardware warranty applies to tool owners who purchase and continuously maintain, without interruption, an OTC Evolve software subscription. Full details available at OTCtools.com

OTC DIAGNOSTICS POWERED BY BOSCH

- OE-level Domestic / Asian / European Coverage
- All system wiring diagrams
- Wireless, J2534 compliant VCI
- Ultimate online and on-tool access to top reported fixes and repair information
- Dual-band Wi-Fi for secure connections to shop Wi-Fi and wireless VCI
- Front- and rear-facing camera
- 10.4" hi-res touch screen

BOSCH POWER BOX 360C

- Bluetooth connectivity for internet radio and stored music with range of up to 150-feet
- Four-way speakers and a subwoofer project 360 degree sound
- Protective aluminum/rubber roll cage
- Runs on Bosch 18 V or 14.4 V Lithium-Ion batteries or plugged into a 120 V AC outlet
- Four-way power outlets

See page 4

Unbeatable coverage for HD trucks, construction equipment and more



Increase Shop Efficiency with the Bosch ESI[truck]

DPF regeneration, component actuation, special tests and automatic module identification for Class 6-8 trucks and more.

3824

Truck and engine coverage

- ▶ **Truck brands:** Freightliner, International, Kenworth, Mack, Volvo, Peterbilt, Sterling, Western Star and more.
- ▶ **Engine brands:** Caterpillar, Detroit Diesel-DMB, Volvo, Mack, Navistar, PACCAR, Perkins, Deutz, MTU and more
- ▶ Brake systems
- ▶ Transmissions
- ▶ Trailer ABS
- ▶ In-depth heavy-duty, medium-duty
- ▶ Light-duty basic

Tests and functions to fix

- ▶ Fault code report for entire truck
- ▶ Automatic vehicle ID
- ▶ Read & clear fault codes
- ▶ Cylinder cut-out
- ▶ Injector actuations
- ▶ Key component actuations
- ▶ Bluetooth wireless to VCI
- ▶ Comparable to industry software including most OEM's

Expert-level diagnostics

- ▶ Vehicle parameter modifications (Injector Codes, Max Speed, VGT, etc.)
- ▶ System tests (some automated)
- ▶ Leakage tests
- ▶ Injector coding and trim files
- ▶ Optional **Troubleshooting & Repair Subscription** (3824-08R) includes:
 - System Wiring Diagrams
 - Component Locations
 - Component Specifications
 - 13,000+ likely fixes based on DTC
 - Installation Specifications
 - System Operating Specifications

ESI[truck] Off-Highway Upgrade Cable Kit with Introductory Software License (3824CBL-UPG)

Add off-highway vehicle and machinery coverage for multiple manufacturers to your 3824 ESI[truck] scan tool. Coverage included for:

- Construction equipment
 - Agricultural vehicles
 - Stationary engines
 - Street sweepers and more
- ▶ **Manufacturer coverage:** Caterpillar, John Deere, Kubota, Perkins, Volvo, Massey Ferguson, SISU, Deutz, Deutz-Fahr, MTU, and more
 - ▶ **System coverage:** Gearbox, HVAC, engine, steering, hydraulic systems, suspension, electronic modules, antipollution, central computer and more
 - ▶ **Diagnostic coverage:** Manual processes, diagnosis info, measurable values, component actuations, ECU data, parameter IDs (PIDs), calibrations and resets, system technical data, wiring diagrams, vehicle technical data and vehicle maintenance info

3824CBL-UPG

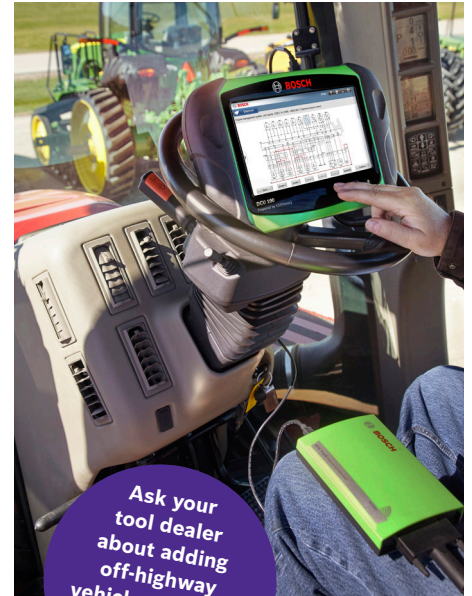
Kit contents:

- ▶ 10 cables for machinery, construction equipment, agricultural vehicles and more
- ▶ Off-highway software package with full diagnostic capabilities. Initial included software expires when your 3824 ESI[truck] diagnostic software expires
- ▶ Software renewals can be done simultaneously, ensuring continuous HD truck and off-highway vehicle coverage

3824-080HW

Off-highway 1-year software license for 3824 ESI[truck]

- ▶ 12-months of off-highway diagnostic coverage, including all coverage updates
- ▶ Used to renew initial software included with Off-highway upgrade cable kit with introductory software license



Ask your tool dealer about adding off-highway vehicle coverage to your ESI[truck]

NEW



NEW



For more information on software updates and off-highway coverage upgrades, visit www.BoschDiagnostics.com/Pro

Off-highway cable upgrade kit and off-highway software only compatible with 3824 and 3824BSC ESI[truck] diagnostic tools. Not compatible with 3823 or 3823BSC diagnostic tools. Customer must first purchase Off-highway upgrade cable kit with introductory software (3824CBL-UPG) prior to purchasing or activating Off-highway 1-year software license (3824-080HW)



1699500000

Bosch HPT 500 High Pressure Leak Tester

Test heavy-duty exhaust systems safely and efficiently in 15 minutes or less

Troublesome **intake and exhaust leaks** are commonly diagnosed with **outdated and inefficient equipment and methods**. These methods are time consuming, dirty, and frequently result in replacement of the wrong components. Low pressure testers, soapy water, and supersonic listening devices can cause revenue generating trucks to spend **unnecessary days in the repair facility, out of service**.

Bosch is addressing these problems with a **new, cost-effective, and safe alternative** that will change standard practices for heavy-duty preventive maintenance and repair. The **HPT 500** uses regular compressed air to reach and maintain a variable pressure of 2 to 20 psi throughout the vehicle's intake and exhaust system. Compressed air mixed with a **visual vapor is forced into the system**, simulating the load of a running engine: both naturally aspirated and forced induction (turbo and supercharged). **Many upstream leaks will only appear under these boosted pressures**. The dense, **highly visible vapor** flows throughout the truck's hoses, tubes and related components and **escapes anywhere there is a leak**.

Learn more at boschdiagnostics.com/pro

The cost-effective, safe alternative for heavy-duty preventive maintenance and repair



Saves
43-120 Min.
per vehicle



Average return on investment in just
4.63 Weeks



Decrease
fuel consumption



Decrease
downtime



Decrease
diagnostic time



Increase
safety



Increase
uptime

Bosch BAT 135 Battery tester with integrated printer

Features:

- ▶ Tests 6V, 12V batteries and 12V, 24V charging systems
- ▶ Test battery capacities from 40-2,000 CCA
- ▶ Test all automotive, light-duty and commercial batteries including:
 - AGM
 - Gel Cell
 - Flooded lead-acid
 - Start/Stop EFB
 - Commercial, SLI
- ▶ Presents State of Health and State of Charge percentage
- ▶ Integrated printer to capture test results and customer records
- ▶ Detachable test clamps for service and replacement
- ▶ Full charging system test with diode/ripple test
- ▶ Micro-load testing for proven, accurate results
- ▶ 1-year warranty

1699200244



HDS 250 Heavy-Duty Scan Tool for Class 4-8 Vehicles

Ideal for heavy-duty shops as a second diagnostic tool and mobile repair trucks. Cost-effective solution for aftermarket shops in need of heavy-duty coverage

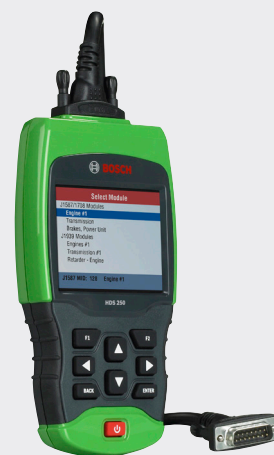
1699200240

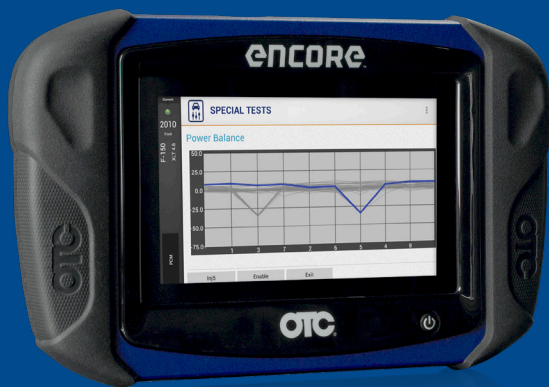
HDS 250 Features

- ▶ Brilliant Color Display
- ▶ Rugged enclosure for durability
- ▶ Class 4 – Class 8 truck coverage featuring "Automatic Protocol Search"
- ▶ HD J1587 / J1708 and J1939 CAN, Engine, Transmission/ABS coverage and more
- ▶ Global OBD II Quick Test
- ▶ Works on 12V and 24V systems
- ▶ Gasoline and diesel engine coverage
- ▶ Read and clear diagnostic trouble codes
- ▶ Live vehicle data includes
 - Engine speed
 - Engine ECU temperature
 - Percent acceleration pedal position
 - Engine intercooler temperature
 - Engine coolant temperature
 - Battery voltage
 - Alternator voltage output
 - Ambient air temperature
 - Air inlet temperature
- ▶ On-screen definitions of diagnostic trouble codes

HDS 250 Includes

HD Scan tool, 9 Pin Deutsch Cable, 6 Pin Deutsch Cable, 16 Pin HD/OBD II Cable, USB Cable, Quick Start Guide, Carrying Case and 1-Year Warranty.





3893 ENCORE

Fastest from code-to-fix

- ▶ OE-level Domestic / Asian / European Coverage
- ▶ 30 million on-tool fixes, maintenance tests and symptom assist
- ▶ Direct link to Identifix® and other repair forums
- ▶ Industry-leading light-duty diesel coverage
- ▶ 7" touch screen

Lifetime hardware warranty*
Engineered and assembled in the USA



3896 EVOLVE

All features of the OTC Encore plus

- ▶ *The industry's best and only tool with full-system wiring diagrams*
- ▶ Wireless, J2534 compliant VCI
- ▶ Dual-band Wi-Fi for secure connections to shop WiFi and wireless VCI
- ▶ Front and rear-facing camera
- ▶ 10.4" hi-res touch screen

Lifetime hardware warranty*
Engineered and assembled in the USA

www.OTCtools.com/fix

*Lifetime warranty applies only to tool hardware as long as owner maintains an active diagnostics subscription. Details at otctools.com.

3914 BATTERY & STARTING/CHARGING SYSTEMS TESTER



- Test automotive batteries and create health reports
- Works on 6V and 12V automotive batteries - Regular Flooded, Enhanced Flooded, AGM, EV and Start-Stop.
- 12V/24V charging/starting systems tests
- Test charging and starting system health to diagnose charging issues
- Email test results (Stores 2,000 test records)
- Test batteries with as little as 1.5V
- 3 LED indicators (Blue: Connected, Green: Power, Red: Trouble)
- 20-inch cable with durable clamps
- Works with Encore or Evolve software version 2.10 and newer
 - 2.10 software includes a new battery and system test app
 - Communicates wirelessly to Encore & Evolve via Bluetooth



✓ Works with Encore or Evolve software version 2.10 and newer

TRIAGE TOOLS WITH CODECONNECT®

EXPANDED EUROPEAN COVERAGE AND ABS DATASTREAM

Triage scan tools range from simple code readers to advanced diagnostic tools featuring live engine and ABS datastream, CodeConnect® and ABS & Airbag codes and definitions (including European vehicles). All scan tools will work with vehicles 1996 and newer, OBD II and CAN, with optional coverage for pre-1996 vehicles available.



3208

OBD II & ABS Scan Tool



3209

OBD II ABS & Airbag Scan Tool



3210

CodeConnect® with ABS & Airbag



3211

OBD I & II Scan Tool

| Product Comparison | 3208 | 3209 | 3210 | 3211 |
|---|----------|------|----------|----------|
| OBD II & CAN compatible | • | • | • | • |
| (All 1996 and newer vehicles) | • | • | • | • |
| On-screen codes, definitions and emissions status | • | • | • | • |
| Erases codes and turns off the Check Engine Light | • | • | • | • |
| Live data and freeze frame data | • | • | • | • |
| ABS/Airbag (Most 1996-2013 GM, Ford, Chrysler, Honda, Hyundai, Nissan & Toyota) | ABS only | • | • | • |
| Manufacturer enhanced definitions | • | • | • | • |
| AutoID™ identifies vehicle being scanned | • | • | • | • |
| Color screen | • | • | • | • |
| Graphing live data | • | • | Dual PID | Dual PID |
| Internet updateable | • | • | • | • |
| Multilingual menu & code definitions | • | • | • | • |
| Record and play back data | • | • | • | • |
| Battery / alternator / charging system monitor | • | • | • | • |
| OBD II Modes 1-A are supported including Mode 6 data | • | • | • | • |
| CodeConnect® over 26 million fixes | • | • | • | • |
| OBD II Ford on-demand tests | • | • | • | • |
| Oil light & battery reset | • | • | • | • |
| Expanded European engine, ABS and Airbag trouble code coverage | • | • | • | • |
| ABS live data and sensor reading | • | • | • | • |
| Steering and brake service resets | • | • | • | • |
| OBD I coverage (1984 – 1995 GM & Ford, 1989 – 1995 Chrysler & Toyota) | • | • | • | • |



3838

Standalone TPMS tool with Bluetooth OBD II

The OTC 3838 is both a sensor activation and diagnostic device that features a wireless OBD II module for TPMS sensor registration. The tool works with all OEM and aftermarket sensors.

- Exclusive wireless OBD-II module for TPMS sensor registration.
- Standalone TPMS tool with activation, relearn & diagnostic capabilities.
- Three years of software updates included.
- Allows for cloning of universal sensors.
- Key fob signal test and infrared print capabilities.



3415

CAN Test Box Breakout Box for Scan Tools

- Connects to Diagnostic Link Connector (DLC).
- Connect leads for increased diagnosis, analysis, and monitoring.
- LEDs display signal detection – Flashing LED's
- Magnifies DLC
- Displays battery voltage with warning

SUBSCRIPTION SOFTWARE

Domestic, Asian and European Software
1-year subscription kit provides a year of frequent and valuable updates for new coverage, coverage enhancements, repair information, application improvements and includes the Diagnostics for Life® lifetime hardware warranty.

Diagnostics for Life® lifetime hardware warranty means OTC supports your Encore/Evolve for as long as you own it, as long as you update it!

The "hardware warranty" applies to the Encore scan tool tablet only. Accessories, such as cables, adapters, batteries and case remain the 90 Day factory warranty from purchase.

3893-LTW

Encore 1-year subscription and Lifetime hardware warranty



3896-LTW

Evolve 1-year subscription and Lifetime hardware warranty



Evolve update includes full access to the Evolve's exclusive full-system wiring diagrams for vehicles 1985 and newer.



3181

130 Amp Heavy-Duty Battery Load Tester

Applying an industry-leading 130 amp load, this ergonomically designed, heavy-duty battery tester provides accurate, reliable test results in just 10 seconds. It includes uniquely designed clamps for a positive grip on top and side post batteries and an extra large, easy-to-read display.

- 130 amp load capacity for accurate results
- 0-16 volt range
- Uniquely-designed clamps for both top and side post batteries
- Extra large display with zero adjust
- Works on both 6V and 12V batteries
- Ergonomic handle design
- Side tabs for on-tool clamp storage
- Back brackets for tool storage on wall or toolbox

3834T

TPR Activation Tool VEHICLE COVERAGE THROUGH 2017

- New lower cost kit for use with Encore, Evolve, Genisys Touch scan tool or as a stand-alone tool.
- Works on vehicle TPMS sensors through 2017.
- Bright graphic display and simple navigation buttons enable vehicle selection for fast activation.
- Automatically adjusts activation output power to eliminate cross activation of near sensors.
- Tool includes a 6 month update subscription from www.tpmsupdates.com





NEW

6975 Vacuum/Pressure System Tester

The 6975 Vacuum/Pressure System Tester can immediately diagnose leaks in pressure or vacuum systems. The patented design includes an intuitive rotary dial for quick switching between pressure and vacuum and an ergonomic pistol grip with lever. High-quality hoses with quick-couple fittings make quick work of hose/adaptor changes and are leak-free under pressure or vacuum.

An integrated rear-mounted gauge provides optimal viewing with testing up to 30 PSI pressure and up to 28 in Hg vacuum. It includes hose adapters, rubber adapters and plastic attachments for diagnosing EGR valves, fuel pressure regulators, thermal and electric vacuum switches, turbocharger waste gates, heating and ventilation control valves, central locking systems, MAP sensors and more. Stored in a convenient blow molded case. Covered by OTC's Lifetime warranty.

Includes:

- Quick Dial Diagnostic Pump Tool
- Silicon-like Hoses (3)
- Black Rubber adapters (2)
- Blue Plastic Adapters (8)



NEW

6976 Cooling System Refilling Gun

The 6976 Cooling System Refilling Gun can eliminate airlocks during cooling system refilling and eliminates the need for system bleeding. Small and large rubber cones suit both passenger and commercial vehicles with no additional adapters needed.

Attach the Cooling System Refilling Gun to your shop air supply then insert the nozzle into the cooling system, like the opening on a radiator and establish vacuum. Insert hose into your new coolant reservoir and switch device to vacuum. It will pull air out of the coolant system while new coolant is added.

Avoid wasting time finding a pocket of trapped air that can cause cooling system failures and inaccurate sensor readings. Packaged in a convenient blow molded storage case. Covered by OTC's Lifetime Warranty.

Includes:

- Refilling gun with integrated hose assembly
- Rubber adapter "stepped" for 1/2" to 1-1/2" diameter opening
- Rubber adapter "stepped" for 1" to 2" diameter opening
- Blow Molded Storage Case
- Operating Instructions



NEW

6978 TestVac Vacuum Test Kit

OTC 6978 Test-Vac Vacuum Test Kit allows fast, efficient testing and monitoring of many vacuum operated components and also allows one man brake bleeding. The new kit can help find vacuum leaks, test fuel, engine and exhaust valves, door locks, and heating/cooling system performance. Included in the kit are the vacuum pump, fluid container, transfer cap, hoses and fittings, packaged in a convenient blow molded storage case and covered by OTC's Lifetime Warranty.

Includes:

- Vacuum pump with integrated vacuum gauge
- Fluid container with transfer cap
- 2 lengths of vacuum hose
- 12 assorted vacuum hose fittings
- 3 brake bleed fittings
- Instruction Manual
- Blow Molded Storage Case



6043 Cooling System Power Flush Gun

Perfectly suited for quick and efficient cooling system flushing. Simply attach it to radiator or heater hoses and you're in business. Also usable in washing engines and even shop floors. Two simple connections: one to shop air and one to a typical water faucet. No. 6043 creates a unique vortex air/water blast for powerful cleaning applications.

Note: While normal water pressure will handle the majority of a cooling system flush, short blasts are sometimes needed to loosen some contaminants from within the system.



8104A Vacuum Brake Bleeder

This one man brake bleeding system allows for fast and efficient vacuum brake bleeding. Universal rubber fitting holds securely on brake bleeder screw. Attach shop air and use the quick release trigger for on-demand vacuum and hands free operation. Compact size and 17 oz. (500ml) capacity.



8104A-SET Brake Bleeder with Auto Filler Set

This one man brake bleeding system allows for fast and efficient vacuum brake bleeding. The Vacuum Brake Bleeder has a universal rubber fitting that holds securely on brake bleeder screw. Attach shop air and use the quick release trigger for on-demand vacuum and hands free operation.

Compact size and 17 oz. (500ml) capacity.

The Master Cylinder Auto Filler automatically refills the brake fluid reservoir during brake bleeding. Base plate retaining clip and height adjustment allows fit on all reservoir types. On/Off tap allows installation and storage without drips or spills. 20 oz. (600ml) capacity.



7991 Cooling System Pressure Tester

Now you can pressure test the cooling system on most cars, light commercial trucks, motorcycles, and even marine applications. The tester's universal fit eliminates the need for multiple adapters.

Note: Will not work on Saturn and Kia cars or Jeep with the plastic reservoir.

6982PMC

Professional Mechanics Collet

OTC 6982PMC is a Professional Mechanics Collet. It is designed to apply in very tight spaces, and can securely grasp broken studs with as little as 1/4" material exposed. great for Exhaust manifold studs - even when frozen or corroded. A variety of collets are included for common applications.

- Designed to securely grasp studs with as little as 1/4" exposure
- Compact - gets behind steering and suspension components
- Draws tight - within 1/16" of head surface to greatly reduce tipping
- Includes 4 collet sizes - 6mm, 7mm, 8mm, and 10mm
- Perfect for broken manifold studs
- Lifetime warranty

Kit Contents:

- 1 Collet Holder and Forcing Screw Assembly
- 4 Collets (6mm, 7mm, 8mm, 10mm)
- Operating instructions

NEW



6982DGS

Drilling Guide System

- Drill perfectly centered holes in broken studs.
- Anchor rail guide on any open hole within reach of broken stud - 6 inch reach.
- 4 bushings for common stud sizes - 6mm, 8mm, 10mm, and 12mm.
- 4 drilling guides for progressive drilling - 1/16", 3/32", 1/8" and 5/32".
- Conveniently stores in vinyl pouch - includes instructions.
- Made in USA with a Lifetime Warranty.



- 6982DGS-1** 4-Pc Bushing Set
- 6982DGS-2** 4-Pc Guide Set
- 6982DGS-3** Replacement Rail



6982DEX

3 Pc Double Edge Screw Extractors

- For unscrewing broken bolts and screws without damaging threads.
- Can be turned in clockwise or counter clockwise direction for right and left handed threads.
- Drive extractor into drill hole for secure fit.
- Hex shank design works with standard hex sockets eliminating rounded corners.
- Industrial Quality - Made from High Strength Steel - Tapered Flute design.

- 6982DEX-1** Dual Edge Screw Extractor (#10 - 1/4")
- 6982DEX-2** Dual Edge Screw Extractor (5/16" - 3/8")
- 6982DEX-3** Dual Edge Screw Extractor (7/16" - 1/2")



6982ACP

Automatic Center Punch

- Accurately marks your drill point every time.
- Creates deep center mark to prevent drill bit from wandering.
- Flared top fits comfortably in palm of hand.
- Allows free hand to place marking tip exactly where you want it.
- Press tool until spring releases causing tip to mark your drilling point.



6792

Transmission Fluid Fill/Extract Kit with Adapters

Designed for undercar transmission fluid service. The 6-liter sealed reservoir is used with shop air to extract or dispense transmission fluid with a simple control valve. A safety relief valve ensures safe operation. Includes a general universal adapter and storage case with 14 OE-style adapters with easy to read application information. Adapters cover most vehicles. All connections are simply press-on quick connects for ease of use. Pictorial operating instruction decals are on the reservoir - keeping important how to and safety information with the product.

Cap Adapters NOT REQUIRED



6977

Universal Cooling System Pressure Test Kit

A Cooling System Pressure Test Kit with a truly universal approach to testing vehicle cooling system pressure. The tester adapts to cooling system hoses from 1/4" to 5/8" in diameter. Find a coolant hose connection and insert the adapter to match hose diameter, couple the hand pump with integrated gauge to the adapter and you're ready to test. When finished, relieve system pressure by slowly loosening the cap on the "degas" bottle. Eliminate the search for the right cap adapter and test cooling systems faster. The hand pump features an easy to read integrated pressure gauge, a padded base to set against vehicle surfaces without scratching and a 36" integrated hose with a quick-coupler mated to the adapters. The hose adapters use durable brass fittings and include a banded spring clamp for easy attachment. A radiator cap adapter with quick connect fitting is included for older vehicles. Every adapter includes a Schrader valve to prevent spray when disconnecting. This Cooling System Pressure Test Kit covers virtually any make and model that enters your shop and is stored in convenient blow molded case. Covered by OTC's Lifetime Warranty.

Product Features

- Hand Pump with integrated gauge
- Dedicated pressure hose with quick-connect
- Raised gauge to reduce chance of damage if tipped
- Padded base to prevent damage to painted vehicle surfaces
- 4 adapters (1/4", 5/16", 1/2" and 5/8") with Schrader valves to prevent spray
- Includes a cap adapter
- Blow molded storage case





6980

Brake Drum and Rotor Puller

- Handles large components such as brake drums, rotors, drive wheels, gears, flywheels, and pulleys.
- One person can easily set the tool in place and use for tough pulls even where there is little access to insert the jaws.
- Spread to 12-3/4" and 5" of reach.
- 7-tons of force, yet weighs less than 10 pounds.
- Can be used with air tools to reduce time and fatigue.

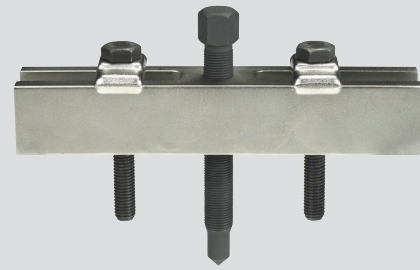


NEW

6979

Heavy Duty Brake Drum and Rotor Puller

The 6979 is the ideal solution for removing frozen, rusted or seized drums and rotors found on 1-ton pickups, school buses and larger vehicles. It has a usable spread of 17.5 inches and a maximum reach of 12.25 inches. It comes with two forcing screws for standard and tall brake drums. Both screws are specially treated for smooth operation and superior longevity. The integrated striking cap on each screw can help pop the rotor or drum loose. An improved design simplifies the puller leg positioning on the cross bar and the legs have a mild radius to the attach point on the drum or rotor. Includes an 8-foot ratchet strap to secure puller legs to the drum or rotor. Covered by OTC's Lifetime Warranty. **SAFETY TIP:** Whenever you're pulling drums or rotors, leave one lug nut on to catch the component when it breaks free.

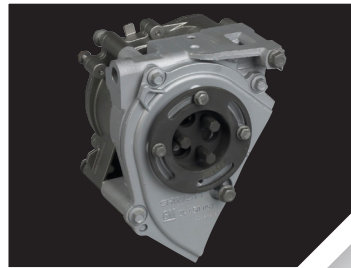


NEW

6614

Heavy-Duty Gear Puller

The OTC 6614 Heavy Duty Gear Puller will remove gears up to 7-1/4" in diameter, including most cam gears. Rated at 8 tons, this puller is stout enough for almost any heavy-duty application and includes a pair of metric bolts for most applications. The slimmer design of the cross block gives more room to set up in tight quarters. The tempered steel, rust inhibitor-coated bolts are graded 10.9 and are sized M12x1.75" and are 90mm in length. Cam gears giving you fits? Covered by OTC's Lifetime Warranty.



Similar to J-43651

6616

GM Water Pump Holding Tool

- Holds timing chain in place so water pump can be removed for service.
- Special design allows easy installation regardless of timing chain orientation.
- Simply remove access plate from front cover and install the tool.
- Tool saves costly loss of timing on 2002-2009 GM 2.2L and 2.4L EcoTech engines.



6617

Alternator Pulley Service Kit

- Overrunning alternator pulley and overrunning alternator decoupler pulley are designed to extend belt life and belt tensioner life. They also make for quieter and smoother accessory drive operation and reduce vibrations in the passenger compartment.
- These tools hold the alternator shaft still so the pulley can be removed or installed.
- A great time saving tool for the technician and the ability to provide a cost saving service for the vehicle owner.

Kit contains:

- Decoupler tool assembly
- 17 mm hex drive
- 17 mm Allen wrench
- 110 mm socket extension
- 28 mm / 21 mm hex cap nut driver
- 28 mm / 18 mm hex cap nut driver
- 22 mm hex cap nut driver



7196

Crank & Cam Seal Service Kit

- Removes and installs camshaft and crankshaft seals on cars, trucks, vans and SUVs without damage.
- Includes a puller coupled with specialized puller legs that hook the seal for quick and easy removal.
- The interchangeable seal install adapters are designed for use with the cam or crank bolt. Kit services seal sizes of 21.5mm to 64mm.



6613

Variable Pin Spanner Wrench

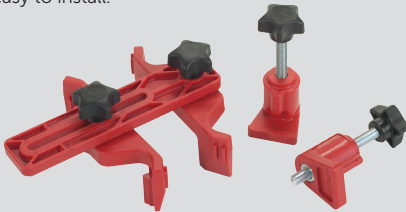
- Universal design fits many different types of pulleys having slots or holes, including camshaft pulleys and crankshaft pulleys.
- Wrench is adjustable from 1-1/4 inch to 5 inches; works with a 1/2 inch ratchet or breaker bar.
- Set Includes: 3.5 mm pin, 4 mm pin, 4.5 mm pin, 5 mm pin, 6 mm pin, 7 mm pin, 10 mm pin and Handle



6678

Cam Gear Holder, 2 pack

- The holders clamp between the engine block or head and the back of the gear to lock it in place.
- Use on single, dual, or quad cam engines to hold valve timing during belt replacement.
- Excellent for diesel injection pump belt replacement.
- The cam gear holders universal design are quick and easy to install.



6679

Cam Gear Clamp & Holder Set

- The holders clamp between the engine block or head and the back of the gear to lock it in place. The cam gear clamp is used between two adjacent gears to lock them together and eliminate movement.
- Use on single, dual, or quad cam engines to hold valve timing during belt replacement.
- Excellent for diesel injection pump belt replacement.



4531

Harmonic Balancer Puller/Installer Set

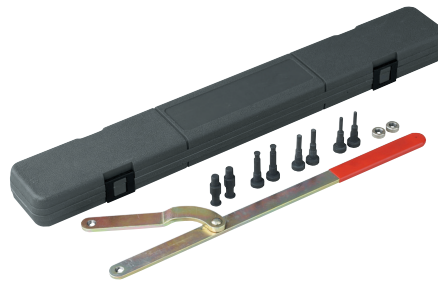
- For easy removal and installation of most harmonic balancers and drive pulleys which are press-fitted onto the crank-shaft.
- A bearing-centered circular 2/3-way puller flange handles 2-1/2" - 4-1/4" bolt circles. An assortment of metric and fractional bolts and adapters provide wide pulling coverage.
- A heavy-duty, 3/4" dia. forcing screw is internally threaded to fit the eight adapters to install harmonic balancers. Adapter sizes included: M16 x 2.0, M14 x 1.5, M12 x 1.5, 1/2"-20, 7/16"-20, 3/4"-16, 5/8"-18, and 9/16"-18.
- A blow-molded plastic storage case keeps set contents organized and protected from loss.



4530

Power Steering Pump Pulley Service Set

- A complete set of tools required to remove and install power steering pump pulleys of most domestic vehicles.
- Fits pulley hubs with diameters of 1-1/8", 1-1/4", 1-5/16" and 1-3/8".
- Includes the necessary adapters for servicing: GM 3.1L, 3100, 3400, and 3800 V6 engines, GM 2.3L Quad 4 four-cylinder engines, and Ford 4.6L and 5.4L V8, 6.8 V10 engines.



4754

Universal Pulley Holder

- Universal design fits many different size pulleys having slots or holes, such as camshaft pulleys or crankshaft pulleys.
- Wrench is adjustable from 1-1/2" to 8-5/8"; four different size step pins are interchangeable.
- Long handle enables technician to easily hold the pulley when tightening or loosening retaining bolts.



4645

Serpentine Belt Tool

- Fits tensioner pulleys with 13 mm-16 mm, 18 mm hex or 3/8" and 1/2" square drives.
- For hard to access tensioners; there are 13 mm and 15 mm 12-point wrenches built into the handle.
- 13 mm, 14 mm and 15 mm crows foot wrenches also included.



7654A

Serpentine Belt Installation Tool

- Durable tool provides extra control and reach during serpentine belt installation.
- Works equally well on V-belts and timing belts.
- Three-pin design for immediate push/pull capacity.
- Handle gives technician twisting control to install belts in confined, hard-to-reach areas.



7425

Stretch Belt Service Set

The Stretch Belt Service Set includes an install tool along with a removal tool. Both tools are placed on a pulley which is turned to slip-on or slip-off stretch fit belts without damage.



7424

Belt Holding Tool

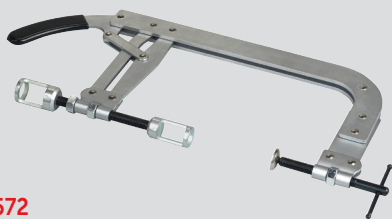
- Keeps belt from falling off of a pulley during belt installation.
- Universal design to fit most pulley styles and sizes.
- Super strong magnet to hold the belt firmly on the pulley.
- Multiple holders can be used for belt applications that fit around many pulleys.
- Durable plastic housing with magnet for steel/iron pulley applications.

6673

Universal Belt Tension Gauge

- Belt tension gauges are used to check drive belt tension on drive belts to ensure maximum belt and bearing life.
- Scale reads 30-180 lbs.





4572

Valve Spring Compressor

- Designed to compress valve springs on overhead valve engines.
- Includes two valve spring adapters, which fit valve spring retainers up to 1" (25 mm) and 1-3/16" (30 mm).
- Unique, direct action compressor lever gives better visibility of valve spring retainers located in difficult access areas.
- Jaw opening of 1-3/8" to 5-5/8" (35 mm to 142 mm); throat clearance of 5-7/8" (150 mm).



4842

Heavy Duty Valve Spring Compressor

Used to compress valve springs for removal or installation. The heavy duty C-frame has a 9" opening and a 5" throat. Kit includes 16mm, 19mm, 23mm, 25mm, and 30mm valve spring retainer adapters.



4510

Hose Pinch Off Pliers Set, 3 Piece

- Shuts off flow through vacuum lines, fuel lines, coolant lines, etc.
- Cocking ratchet mechanism holds pivoting jaws tightly in place. Heavy-duty swivel jaws pivot to assure parallel pinching.
- Available separately:

4510-8 – 8" tool for small hoses and tight areas.

4510-10 – 10" tool for radiator and vacuum lines.

4510-12 – 12" tool for radiator and vacuum lines.



4522

Vacuum Hose & Fuel Line Removal Tool

- Designed to remove vacuum hose or fuel lines (3/16" to 1/2") from fittings or tubing.
- Simply place the black jaw on the fitting or tubing – the jaw will grip the material. Then use the silver jaw to push the vacuum hose or fuel line off the fitting or tube.



5606

Compression Tester Kit

Designed for complete compression testing on gasoline engines, including domestic, imports, motorcycles, marine, and small engines. Unique problem solving features for today's limited space engine compartments.

Features and benefits:

- Corrosion resistant nickel plated finish.
- Adapters work on both flat and tapered seat plugs.
- Extra long 25" flex hose gauge assembly with quick coupler, allows easy viewing out of cluttered engine compartment.
- 2-1/2" gauge features chrome bezel and rugged protective outer boot.
- Dual scale gauge reads 0-300 psi and 0-2100 kPa.
- 12" flex-14 mm standard reach.
- 12" flex-14 mm long reach.
- 10 mm, 12 mm, and 18 mm thread adapters.
- Rugged blow molded hard case with removable lid.
- Repair parts kit.



5613

Vacuum/Pressure Gauge Kit

Ideal for testing vacuum lines and components. Accurately tests low-pressure fuel systems. Quickly diagnose internal engine problems such as bad rings, valves and leaking head gaskets. Kit comes complete with adapter for most applications. Pin point hard to find problems such as cracked lines, PCV, fuel pump, fuel filters and more.

Features and benefits:

- Large 3-1/2" gauge features a chrome bezel and rugged protective outer boot.
- Dual purpose gauge reads vacuum and pressure.
- Dual scale gauge reads 0-30 in. Hg vac and 0-70 cm Hg, also reads 0-15 psi and 0-100 kPa.
- Built in rear hook allows gauge to be hung at eye level.
- Adapters for most applications.
- Blow molded hard case with removable lid.
- Detailed instruction chart.



5605

Deluxe Compression Tester Kit

Complete with standard and specialty adapters, this deluxe kit offers a complete package for compression testing on gasoline engines. Kit includes the deep well connector used on recessed plug well style heads and the Ford engine adapter using 16 mm thread plugs.

Features and benefits:

- Corrosion resistant nickel plated finish.
- Adapters work on both flat and tapered seat plugs.
- Extra long 25" flex hose gauge assembly with quick coupler, allows easy viewing out of cluttered engine compartment.
- 2-1/2" gauge features chrome bezel and rugged protective outer boot.
- Dual scale gauge reads 0-300 psi and 0-2100 kPa.
- 8" deep well 14 mm connector.
- 5" flex Ford 16mm adapter.
- 12" flex-14 mm standard reach.
- 12" flex-14 mm long reach.
- 10 mm, 12mm, and 18 mm thread adapters.
- Rugged blow molded hard case with removable lid.
- Repair parts kit.



5609

Cylinder Leakage Tester Kit

Quickly diagnose internal engine problems such as bad rings, valves and leaking head gaskets. Kit come complete with adapters for most applications.

Features and benefits:

- Dual 2-1/2" gauges feature chrome bezel and rugged protective outer boot.
- Scales read 0-100 psi and 0-700 kPa.
- Pressure regulated manifold includes quick couplers.
- Long flex 24" 14 mm hose.
- 10 mm, 12 mm and 18 mm thread adapters.
- Blow molded hard case with removable lid.
- Detailed instruction chart.



4411

Ratcheting Hose & PVC Cutter (Standard)

- Cuts hose and PVC up to 1-3/8" dia.
- Features metal frame and ergonomic handles for high leverage.
- Compound ratcheting action provides maximum cutting power.
- Will also cut cable and wires.



4412

Ratcheting Hose & PVC Cutter (Heavy Duty)

- Cuts hose and PVC up to 1-3/4" dia.
- Features metal frame and rubber padded ergonomic handles for high leverage and comfort.
- Compound ratcheting action provides maximum cutting power.
- Will also cut cable and wires.



6784 Euro/GM Oil Socket Kit

Popular oil filter wrenches for the GM, BMW, Audi, and VW. High quality, 3/8" drive, forged sockets designed to last a lifetime.

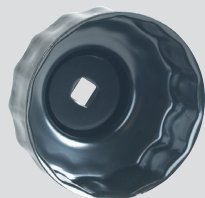
3-piece oil socket kit contains:

- 27 mm socket for the Cadillac STS 3.2L V6 and the Mercedes-Benz 1.8L I4.
- 32 mm socket for the 2.2L GM Ecotec and Saabs.
- 36 mm for the BMW M52, M60, M62, M70, & M73 engines; M-B OM604, 605, & 606 engines; VW/Audi VR6 engine.



6786 Oil Filter Cartridge Set

- Fits today's oil filter cartridge style filter applications.
- Short socket style allows for proper clearance when removing the filter element.
- 24mm – Cadillac, BMW.
- 27mm – Cadillac, Mercedes, Buick, Saturn, Saab, Smart, VW.
- 29mm – Dodge.
- 32mm – Saturn, Saab, various GM.
- 35/36mm – Ford, Mini Cooper, Mercedes, BMW, VW/Audi, Mack Truck.
- 38mm – small Diesel engine applications.



6901 GM Oil Filter Socket

Applications: 1999–2002 Olds Intrigue and 2001–2002 Olds Aurora with 3.5L V6 engine.

- This is a required tool to remove the oil filter cap from the oil pan to access the filter cartridge.



6905 Subaru Oil Filter Socket—66.5 mm, 14 Flutes

- Socket fits between the exhaust manifold and the oil filter for easy removal and installation of the filter.
- Works on 2003–newer Subaru vehicles having the 2.5L 4-cylinder, turbo engine.



6903 Ford / Mazda Oil Filter Socket—75.6 mm, 14 Flutes

- Designed at 75.6 mm to fit 2.3L 4-cylinder engines.
- Works on Ford Fusion, Mercury Milan, Mazda 3, Mazda 5, and Mazda 6.



6906 Toyota Oil Filter Socket—65 mm, 14 Flutes

Avalon

- 2005–'07 V6 3.5L (2GR-FE), 1995–2004 V6 3.0L (1MZ-FE)

Camry

- 2007 V6 3.5L (2GR-FE), 2004–'06 V6 3.3L (3MZ-FE), 1994–2006 V6 3.0L (1MZ-FE)

Camry Solara

- 2004–'07 V6 3.3L (3MZ-FE)

Highlander

- 2004–'07 V6 3.3L (3MZ-FE) — also works on the hybrid version of this engine

RAV4

- 2006–'07 V6 3.5L (2GR-FE)

Sienna

- 2007 V6 3.5L (2GR-FE)
- 2004–'06 V6 3.3L (3MZ-FE)
- 1998–2003 V6 3.0L (1MZ-FE)



6904 Hyundai and Kia Oil Filter Socket—88.5 mm, 15 Flutes

- Works on newer Hyundai Sonata and Santa Fe 3.3L V6 engines.
- Works on newer Hyundai Azera, Veracruz and Entourage 3.8L V6 engines.
- Works on newer Kia Amanti, Sedona and Sorrento 3.8L V6 engines.



4568 Three-Leg Oil Filter Wrench

- Fits filters ranging from 2-1/2" to 5-1/4" (65 mm to 135 mm) in diameter.
- To turn the tool, use a 1/2" ratchet in the ratchet drive or a 13/16" wrench on the nut.
- Knurled legs provide extra gripping power.



4440 Heavy-Duty 3 Leg Filter Wrench Standard

- Self gripping design for true universal fit from 3" to 4-3/4".
- Heavy duty knurled leg design for extra grip and strength.
- 1/2" square drive with 21 mm hex option.



4441 Heavy-Duty 3 Leg Filter Wrench Large

- Self gripping design for true universal fit from 4" to 6 1/2".
- Heavy duty knurled leg design for extra grip and strength.
- 1/2" square drive.

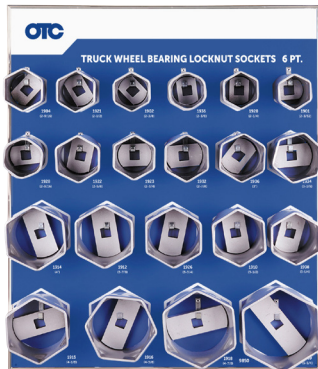


4560 Small adjustable oil filter pliers

- 13-1/2" long; fits filters ranging from 2-1/4" to 5" (57 mm to 127 mm) in diameter.

4561 Large adjustable oil filter pliers.

- 18" long; fits filters ranging from 3-3/4" to 7" (95 mm to 178 mm) in diameter.



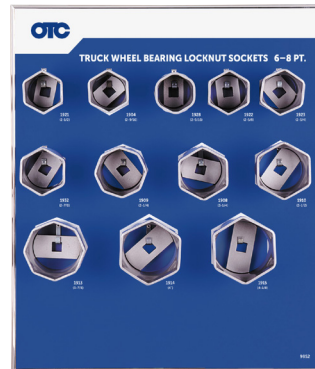
9850 Truck Wheel Bearing Locknut Sockets (6-pt.)

- Wheel bearing locknuts are easy to remove or install with these specially designed sockets. They're made of high-strength steel and resist rounding out.
- 21 wheel bearing locknut sockets (6 pt.) with tool board.
- Sockets are designed for use with 3/4" square-drive manual tools only. Impact tool use voids warranty.



9851 Wheel Bearing Locknut Sockets (8-pt.)

- Wheel bearing locknuts are easy to remove or install with these specially designed sockets. They're made of high-strength steel and resist rounding out.
- 18 wheel bearing locknut sockets (8 pt.) with tool board.
- Sockets are designed for use with 3/4" square-drive manual tools only. Impact tool use voids warranty.



9852 Wheel Bearing Locknut Sockets (6-pt.) or (8-pt.)

- Wheel bearing locknuts are easy to remove or install with these specially designed sockets. They're made of high-strength steel and resist rounding out.
- 12 popular sizes in 6- or 8-point.
- Sockets are designed for use with 3/4" square-drive manual tools only. Impact tool use voids warranty.

| No. | Description |
|------|----------------------------------|
| 1901 | Locknut socket (2-3/32") |
| 1902 | Locknut socket (2-3/8") |
| 1904 | Locknut socket (2-9/16") |
| 1906 | Locknut socket (3") |
| 1908 | Locknut socket (3-1/4") |
| 1910 | Locknut socket (3-1/2") |
| 1912 | Locknut socket (3-7/8") |
| 1914 | Locknut socket (4") |
| 1915 | Locknut socket (4-1/8") |
| 1916 | Locknut socket (4-3/8") |
| 1918 | Locknut socket (4-7/8") |
| 1920 | Locknut socket (2-1/4") |
| 1921 | Locknut socket (2-1/2") |
| 1922 | Locknut socket (2-5/8") |
| 1923 | Locknut socket (2-3/4") |
| 1926 | Locknut socket (3-3/4") |
| 1928 | Locknut socket (2-9/16" rounded) |
| 1932 | Locknut socket (2-7/8") |
| 1934 | Locknut socket (3-1/8") |
| 1936 | Locknut socket (2-3/8" rounded) |
| 1939 | Locknut socket (5-1/4") |

| No. | Description |
|------|---------------------------|
| 1903 | Locknut socket (2-3/8") |
| 1905 | Locknut socket (2-9/16") |
| 1907 | Locknut socket (3") |
| 1909 | Locknut socket (3-1/4") |
| 1911 | Locknut socket (3-1/2") |
| 1913 | Locknut socket (3-7/8") |
| 1917 | Locknut socket (4-3/8") |
| 1919 | Locknut socket (4-7/8") |
| 1924 | Locknut socket (3-3/8") |
| 1925 | Locknut socket (3-3/4") |
| 1927 | Locknut socket (3-13/16") |
| 1929 | Locknut socket (2-5/8") |
| 1930 | Locknut socket (2-7/8") |
| 1931 | Locknut socket (3-5/8") |
| 1933 | Locknut socket (2-7/8") |
| 1935 | Locknut socket (3-1/8") |
| 1937 | Locknut socket (2-3/4") |
| 1938 | Locknut socket (4-1/2") |

| No. | Description |
|------|--------------------------------------|
| 1904 | Locknut socket (2-9/16" hex) |
| 1908 | Locknut socket (3-1/4" hex) |
| 1909 | Locknut socket (3-1/4" 8 pt.) |
| 1910 | Locknut socket (3-1/2" hex) |
| 1913 | Locknut socket (3-7/8" 8 pt.) |
| 1914 | Locknut socket (4" hex) |
| 1915 | Locknut socket (4-1/8" hex) |
| 1921 | Locknut socket (2-1/2" hex) |
| 1922 | Locknut socket (2-5/8" hex) |
| 1923 | Locknut socket (2-3/4" hex) |
| 1928 | Locknut socket (2-9/16" hex rounded) |
| 1932 | Locknut socket (2-7/8" hex) |



1944 Budd Wheel Sockets

- Metric sizes for Isuzu, Hino, Mitsubishi Fuso, and import trucks; fit front and rear axle wheels.
 - 1-1/2" hex Budd wheel socket for American-made trucks with dual rear wheels.
- These sockets work on the import truck Budd wheels. Their extra deep design lets you remove both nut and stud with just the one socket. Usable with a 1" square drive impact wrench.

1944 – Consists of 1945A, 1946A, 1947A, 1948A, and 1949A, in a blow molded organizer case.

1945A
35 mm hex socket with 17 mm sq.

1946A
38 mm hex socket with 20 mm sq.

1947A
41 mm hex socket with 21 mm sq.

1948A
33 mm hex Budd wheel socket. For Mack Midliners, White Volvo, and other import trucks w/dual rear wheels.

1949A
1-1/2" hex Budd with 13/16" square wheel socket. For American-made trucks with dual rear wheels.



5047 Lug Nut Cap Remover

- Remove chrome-plated lug nut caps from heavy-duty trucks and trailers
- Coated jaws won't slip off caps for fast, damage-free removal

5047LP

Lug Nut Cap Remover Locking Pliers

- Designed to remove lug nut caps found on heavy duty truck and trailers quickly and easily without damage.
- Locking plier design with specially coated jaws apply maximum grip on the lug nut caps without damage.





30-Ton King Pin Pusher Set

The Heavy Duty Kingpin and Brake Anchor Pin Pusher utilizes its cylinder and hydraulic force to replace traditional time-consuming torch and hammer methods. It helps get the job done in minutes instead of the better part of a day. Five special collars and two pins allow this unit to work on both straight and tapered kingpins. It accommodates sizes from 7/8" to 2" in diameter and up to 11-1/4" in length. With 30 tons of force, it can push out even the most corroded kingpins. The anchor pin can be removed quickly by using the special adapter installed in the pusher's base block and the unit positioned over the brake's spider. Included are the 4121A-MA hydraulic cylinder and 4012A Two-Speed Hand Pump that make the job easy.

4240A

Complete kingpin and anchor pin pusher set with hydraulics.

4241

King- and anchor-pin pusher with anchor pin adapters without hydraulics.



4295

Wheel Stud Service Kit

- Works on most hubs for installation and removal.
 - All sizes of studs.
- Installation done by pushing on the head, eliminating the need for threaded adapters.
 - Reduces number of adapters required
 - Reduces damage to studs
 - Increases ease of use
- Remove and install 10 studs in only 10-15 minutes (compare to 20-30 minutes for more expensive competitive products).
- Can be powered with an impact wrench, no hydraulic power source required.
- No need to remove hub from vehicle.
- Reduces risk of damage to hubs, studs, and bearings when using tool.
- Weighs only 12 lbs., assembled to remove studs and 14 lbs., assembled to install studs.

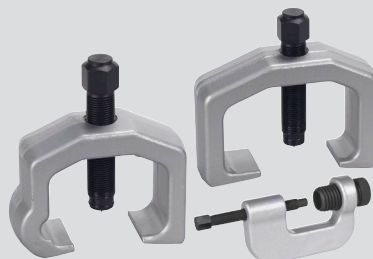


7180

Universal Bearing Cup Installer

This handy, adjustable tool is designed to install wheel-bearing cups in a wide range of heavy-duty axles. Simply adjust and lock the jaws to the cup I.D., slip on the new cup, set it in the bore, and drive it in with a hammer. The tool helps eliminate the damage caused by makeshift methods.

- Works on axles from 11,000 to 50,000 lb. capacity.
- Adjusts to fit 3-5/8" to 6-1/2" O.D. bearing cups, which adds up to as many as 30 individual drivers.



5054

Air Brake Service Kit

This kit has the tools needed to remove slack adjusters and push-rod clevis pins used in the S-cam brake systems of class 7 and 8 vehicles.

- Works on manual or automatic slack adjusters.
- Includes Nos. 5055 and 5056 slack adjuster pullers, 5057 brake clevis pin press, and a plastic storage case.



5080A

Truck Front Leaf Spring, Pin, and Bushing Service Set

- Delivers 10 tons of hydraulic force to remove and install truck front spring eye bushing assemblies quickly and easily.
- Services bushings with diameters from 1-1/4" through 1-7/8", and pin diameters from 7/8" through 1-1/8". Handles all popular OE and aftermarket components, including Horton pin and bushing assemblies.
- Service bushing assemblies, in many cases, without removing leaf spring hangers and spring assemblies from the vehicle.
- All accessories are included except the hydraulic hand pump and hydraulic hose which must be purchased separately.



5038

Brake Anchor Pin and Bushing Service Set

With the No. 5038, there's no need to remove the bearing hub assembly just to replace the pins and bushings on 16-1/2" S-cam trailer and tractor "Q" brake systems.

- Special tooling and our C-frame press get you past the hub assembly, so you can do the job quickly and professionally without damaging other parts.
- Includes everything needed for removal and replacement.



5081

S-Cam Air Brake Spring Tool

- Eliminate makeshift, unsafe methods of unhooking and reconnecting retaining springs when replacing brake shoes on heavy-duty tractors and trailers.
- Simply hook the retaining spring loop and press down. Lever action against the axle makes the job a snap!



5085

Hub Oil Seal Puller

- Eliminates bearing and hub damage that can occur when a punch and hammer is used to remove the seal.
- Extra long 28" handle provides leverage, unique pulling head design quickly and easily removes the seal in one piece.
- Built from the highest quality heat-treated steel.
- Removes hub seals on trailer and truck axles, including truck steering axles.



Davco Diesel Filter Wrenches

- Found on Caterpillar, Cummins, Detroit Diesel, International, Mack, Mercedes-Benz, Volvo and other engines.
- Durable, stainless steel construction.
- Precise, laser-cut angles.
- Opens vent cap also.
- Soft, ergonomic handle.

6914

Fits Davco Diesel filter models, 232-233-234.

6915

Fits Davco Fuel filters 382 & 384.



1522A Heavy-Duty 2,000 lb. Capacity Low-Lift Transmission Jack... for Class 7 and 8 Trucks

- Includes No. 220492 adapter for Eaton® Fuller® RoadRanger® transmissions.
- Pump handle rotates 360° for operator convenience; ball bearing 3.5" diameter swivel casters provide easy positioning of jack.
- Safety overload system prevents use of jack beyond its rated capacity, and a safety bypass protects the hydraulic cylinder from damage.

Specifications:

Min. height is 6-7/8"
 Max. height is 35-1/4"
 Forward tilt – 24°
 Backward tilt – 18°
 Side tilt (either side) – 11°
 Overall length – 43-1/2"
 Overall width – 26"



5091 HD Spindle Adapter

- Adapter for low lift transmission jacks that holds the spindle assembly firmly in place during king pin service.
- Eliminates the need to completely disassemble the brakes to reduce spindle weight for handling.
- Spindle assembly can be raised to a comfortable working height while replacing king pin bearings or bushings.
- Patented design will work with standard HD truck bolt patterns and wheel stud sizes.
- Adapts to most low lift transmission jacks.



OTC Single Acting Cylinder Rams



| | | Cap. in Tons | Stroke | Height Collapsed | Height Extended | Oil Cap. (cu. in.) |
|-------|----------------------------|--------------|---------|------------------|-----------------|--------------------|
| 4100A | 5-Ton Single Acting Ram | 5 | 3" | 5-11/16" | 8-11/16" | 3.23 |
| 4101A | 5-Ton Single Acting Ram | 5 | 5-1/4" | 10-7/16" | 15-11/16" | 5.74 |
| 4103A | 10-Ton Single Acting Ram | 10 | 2-1/8" | 5-9/16" | 7-11/16" | 4.8 |
| 4104A | 10-Ton Single Acting Ram | 10 | 6-1/8" | 11-1/2" | 17-5/8" | 13.9 |
| 4105A | 10-Ton Single Acting Ram | 10 | 10-1/8" | 15-1/2" | 25-5/8" | 22.75 |
| 4106A | 25-Ton Single Acting Ram | 25 | 6-1/4" | 13-3/8" | 19-5/8" | 32.2 |
| 4107A | 25-Ton Single Acting Ram | 25 | 14-1/4" | 21-3/8" | 35-5/8" | 73.5 |
| 4108A | 5-Ton LP Single Acting Ram | 5 | 9/16" | 1-5/8" | 2-3/16" | .62 |
| 4110A | 55-Ton Single Acting Ram | 55 | 6-1/4" | 11" | 17-5/16" | 69 |



4012A 2-Speed Hydraulic Hand Pump

This 2-speed pump is ideal for single-acting rams. Developing up to 10,000 psi operating pressure, the pump operates horizontally or vertically in the "head down" position. Fingertip control provides instant release or pumping action. Has a built-in safety overload valve. Ideal for use with OTC single-acting rams, or similar competitors' rams.

| Specifications | 4012A |
|---------------------------|-------------|
| Max. operating pressure | 10,000 psi |
| Volume per stroke Stage 1 | .79 cu. in. |
| Volume per stroke Stage 2 | .16 cu. in. |
| Reservoir capacity | 43 cu. in. |
| Oil port | 3/8" NPT |

9300 STINGER SERIES BOTTLE JACKS GIVE YOU LIFTING RANGE FROM 2 TO 50 TONS.

- Forged base and cylinder to ensure strength and eliminate leaks.
- Chromed pump piston and ram for additional rust resistance.
- In-line design for increased ease of use in positioning and operation.
- Includes free seal kit with each unit to extend product life.
- ANSI/PALD compliant.



OTC 9300 Stinger Series Bottle Jacks

| Cap. (tons) | Stroke | OTC No. | Retracted Height min. | Length of Screw Extension | Height with Screw Extension | Pump Strokes to Extend Piston One Inch | Saddle Dia. | Base Size | Carry Handle | Weight |
|-------------|----------|---------|-----------------------|---------------------------|-----------------------------|--|-------------|-------------------|--------------|-----------|
| 2 | 4-5/8" | 9302 | 7" | 2-3/8" | 14" | 8 | 13/16" | 4-5/16" x 2-9/16" | No | 5.7 lbs. |
| 3 | 4-1/2" | 9303 | 7-1/2" | 2-9/16" | 14-9/16" | 13 | 15/16" | 4-9/16" x 2 7/8" | No | 7 lbs. |
| 5 | 4-13/16" | 9305 | 7-13/16" | 3" | 15-5/8" | 20 | 1-1/8" | 5-3/16" x 3" | No | 9 lbs. |
| 8 | 4-15/16" | 9308 | 7-13/16" | 3" | 15-3/4" | 21 | 1-3/8" | 6" x 3-9/16" | No | 13.2 lbs. |
| 12 | 6" | 9312 | 9-3/8" | 3-1/4" | 18-5/8" | 21 | 1-3/4" | 6-9/16" x 4-3/16" | Yes | 18.9 lbs. |
| 12 | 3-11/16" | 9314 | 7-1/16" | 2-7/8" | 13-5/8" | 21 | 1-3/4" | 6-9/16" x 4-3/16" | Yes | 16.1 lbs. |
| 20 | 6-7/8" | 9320 | 10-5/8" | 2-15/16" | 20-7/16" | 28 | 2-1/8" | 7" x 4-11/16" | Yes | 28.6 lbs. |
| 20 | 3-7/16" | 9322 | 7-3/16" | 1-11/16" | 12-5/16" | 25 | 2-1/8" | 7" x 4-11/16" | Yes | 22.5 lbs. |
| 30 | 6-5/8" | 9330 | 11" | N/A | 17-5/8" | 41 | 2-1/2" | 7-11/16" x 6" | Yes | 43.2 lbs. |
| 50 | 7-3/16" | 9350 | 11-3/4" | N/A | 18-15/16" | 74 | 2-1/2" | 8-11/16" x 7" | Yes | 76.5 lbs. |

MADE IN USA* - LEAK DETECTORS FROM ROBINAIR
 MEETS SAE J2913 & SAE J2791 ASHRAE 173-2012, EN14624-2012 INDUSTRY STANDARDS
 * Made in USA with globally sourced components



LD3

- Loud audible alert
- Automatic calibration

LD3 Features

- Long life, stable sensor
- Automatic calibration and reset to ambient
- 3 adjustable sensitivity levels
- Low battery indicator
- True mechanical pump
- Uses 4 AA alkaline batteries, included
- Rubberized Santoprene handle grip

LD5

- Color display with graphics and visual alerts
- Bar graph mode helps locate leaks faster
- Loud audible alert
- LED inspection lights
- Automatic and manual calibration

LD5 Features

- Unique color graphic LCD display
- Long life, stable sensor
- Automatic calibration and reset to ambient
- User friendly message and error screens
- High-intensity LED inspection light
- 3 adjustable sensitivity levels
- Low battery indicator
- True mechanical pump
- Audio mute function
- Uses 4 AA alkaline batteries, included
- Rubberized Santoprene handle grip

UV Leak Detection Kit



16235

UV Leak Detection Kits

- The easiest and most accurate gun available today.
- No guesswork – a pre-measured application every time.
- One squeeze injects a pre-measured amount (1/8 oz.) of dye. No more adding too much dye.

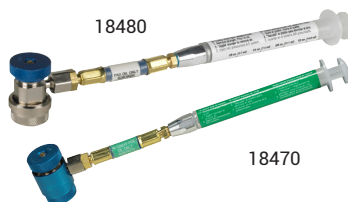
LD7

- Color display with graphics and visual alerts
- Bar and Pinpoint graphing modes help locate leaks faster
- Loud audible alert with mute option
- UV and Clear LED inspection lights
- Automatic and manual calibration

LD7 Features

- Patented 3 LED UV lights with 395-415 nm; wavelength is optimum for A/C dye fluorescence
- Unique color graphic LCD screen
- Long life, stable sensor lasts up to 10 years
- Sweep mode function to pinpoint leak source
- Automatic calibration and reset to ambient
- User friendly message and error screens
- High-intensity LED inspection light
- 3 adjustable sensitivity levels
- Low battery indicator
- True mechanical pump
- Audio mute function
- Uses 4 AA alkaline batteries, included
- Rubberized Santoprene handle grip

Syringe-type Injectors



Use these syringe-type injectors to add oil to a fully pressurized A/C system. Fill the barrel with the amount of oil needed, connect the injector, and press the plunger.

- 18480**
R-134a oil injector, PAG labeled
 - 18490**
R-134a oil injector, POE labeled
 - 18460**
R1234yf oil injector, generic
 - 18465**
R1234yf oil injector, PAG labeled
 - 18470**
R1234yf oil injector, POE labeled
- Not recommended for UV dye injection.

R-1234YF Recovery Leaders



| Features | AC1234-4 | AC1234-6 |
|---|-----------------------------|-----------------------------|
| Fully automatic operation - program for service, walk away and return when complete | Y | Y |
| Integrated refrigerant identifier (meets SAE J2927) | Y | Y |
| Charge accuracy within +/- .5 oz | Y | Y |
| Automatic internal tank refill - no stopping to fill internal tank during or before service | Y | Y |
| Liquid refrigerant flush function - flush A/C system components using liquid refrigerant instead of harsh chemicals | Y | Y |
| 98.5% recovery efficiency | Y | Y |
| Programmable vacuum operation - quickly achieves necessary vacuum level in any condition | Y | Y |
| Automatic oil drain - shows how much oil was removed from the system during service | Y | Y |
| Automatic air purge - removes potential of air accumulating in the internal tank | Y | Y |
| System leak test to identify gross leaks in a system | Y | Y |
| Color graphical display | 4.3" 480x272 QVGA color LCD | 5.7" 960x240 QVGA color LCD |
| On-board printer | Optional | (Y) for future use |
| Ethernet Network Port | - | (Y) for future use |
| USB 2.0 Port | - | (Y) for future use |
| Audio jack | - | Y |
| Standard SD Card slot | Y | Y |
| Meets / exceeds SAE J2843 requirement for R-1234YF recover, recycle and recharge equipment | Y | Y |

New Vehicle Database Screens



Vehicle Database Screens R-134a Vehicle A/C Refrigerant Database 2018

- Confirm A/C system charge capacities directly from your Robinair A/C RRR machine for R-134a and R-1234yf systems, sold separately.
 - Includes charge amounts and component oil capacities for vehicle model years 1997-2018 using R-134a refrigerant and vehicle model years 2013-2018 using R-1234yf refrigerant 34413-A.
 - Database helps ensure the vehicle system is charged with the correct amount of oil, per factory and OEM specification
- 34411-H** – R-134a Vehicle A/C Refrigerant Database 2018. Compatible with legacy Robinair R-134a machines 34788, 34788-H, 34988.
- 34412-C** – R-134a Vehicle A/C Refrigerant Database 2018. Compatible with new Robinair R-134a machines 34288NI, 34788NI, 34788NI-H, 34988NI.

R-1234yf Vehicle A/C Refrigerant Database 2018

- 34413-A** – R-1234yf Vehicle A/C Refrigerant Database 2018. Compatible with new Robinair AC1234-4 R-1234yf recovery machine.



HD A/C Recovery and Multi-Refrigerant Recover, Recycle and Recharge Machines

34888HD

NEW

The Robinair 34888HD heavy-duty machine recovers, recycles, evacuates, leak-tests and recharges R-134a with 98.5% efficiency in both small and large mobile air conditioning systems.

- Large capacity, removable 50-lb. tank and liquid pump for larger A/C systems, typically found in buses
- Nitrogen port to dry and leak test A/C systems
- Fully automatic recovery, system evacuation, leak testing, refrigerant charge and oil drain/inject
- Optional printer for capturing and retaining vehicle service data



17800C

The 17800C recovers, recycles, evacuates and recharges, all in one fast and continuous operation through one hook-up. It's ideal for mass transit vehicles, buses, refrigerated trailers or containers and other applications that use refrigerants not typically found in mobile applications.

- Automatically controls machine functions, leading the user through operations and also notifying when it's time to change the filter drier, and vacuum pump oil
- Automatically adjusts from liquid to vapor for fast and efficient recovery.
- Electronic scale makes it simple to recharge to factory specifications; also weighs recovered refrigerant and provides tank overflow protection.
- 5 cfm vacuum pump is large enough to thoroughly evacuate almost any system; making it ready for recharging.
- Manual air purge function to remove any non-condensable contaminants.
- Vacuum leak test function allows user to monitor the system for vacuum decay to determine if a leak exists in the A/C system.
- Automatic oil drain allows the user to see amount of oil removed from the system being serviced.
- Heavy-duty filter can handle up to 300 lbs. of refrigerant, effectively removing moisture and acid from the refrigerant.
- Easy to view 4.3" color graphical display.
- Maintenance counters to monitor cumulative amounts of refrigerant recovered and charged, as well as other machine operation variables.
- Optional printer can be added to expand capabilities and provide printed record of service performed.
- Compatible with R12, R22, R134A, R401A, R401B, R402A, R402B, R404A, R407A, R407B, R407C, R410A, R500, R502, and R507 refrigerants.



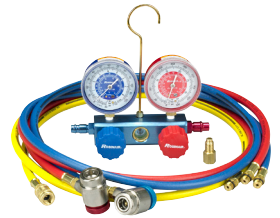
NEW

Prices limited to supplies on hand. Not responsible for errors in description or pricing. / 18-71 Q1 2019 edition, Printed in U.S.A.

41234

R1234yf Aluminum Manifolds and Hose Set

- Easy-to-read 3-1/8" adjustable gauges.
- Durable aluminum manifold block with fittings.
- Improved face seal valves provide a tight seal, less wear and improved flow.
- Easy-to-grip control knobs.



2-Way Brass Manifold

45111

R134a Manifold Hose Kit

- 90° manual couplers
- 72" R134a hose set



TIF-9010A

Slimline Programmable Scale

- Completely portable refrigerant scale, battery powered, can be used with all refrigerants.
- Extreme accuracy.
- 110 lb./50 kg capacity.



Robinair Vacuum Pumps

VacuMaster® Single Stage Vacuum Pumps

15115

1.5 CFM Vacuum Pump

15310

3 CFM Vacuum Pump

15510

5 CFM Vacuum Pump



VacuMaster® 2-Stage Vacuum Pumps

15150

1.5 CFM Vacuum Pump

15300

3 CFM Vacuum Pump

15500

5 CFM Vacuum Pump



CoolTech® Vacuum Pumps

15434

4 CFM Vacuum Pump

15600

6 CFM Vacuum Pump

